



KL-0190-13

Compact Unlocking Tool



Product information

EN

 Read and understand before use!

www.gedore-automotive.com



GEDORE Automotive GmbH

Breslauer Straße 41
78166 - Donaueschingen
Postfach 1329
78154 Donaueschingen - GERMANY

+49 (0) 771 / 8 32 23-0
+49 (0) 771 / 8 32 23-90
info.gam@gedore.com
gedore-automotive.com

GEDORE TOOLS, INC.

Only for USA, Canada & Mexico / Sólo para EE.UU., Canadá y México
Seulement pour les USA, le Canada et le Mexique
7187 Bryhawke Circle, Suite 700
North Charleston, SC 29418, USA

+1-843 / 225 50 15
+1-843 / 225 50 20
info@gedoretools.com
gedore.com

Version 1 - 02/2022

0190-13_EN211202.indd

Product description

KL-0190-13 - Compact unlocking tool

Universally suitable for a wide range of cable connector systems.

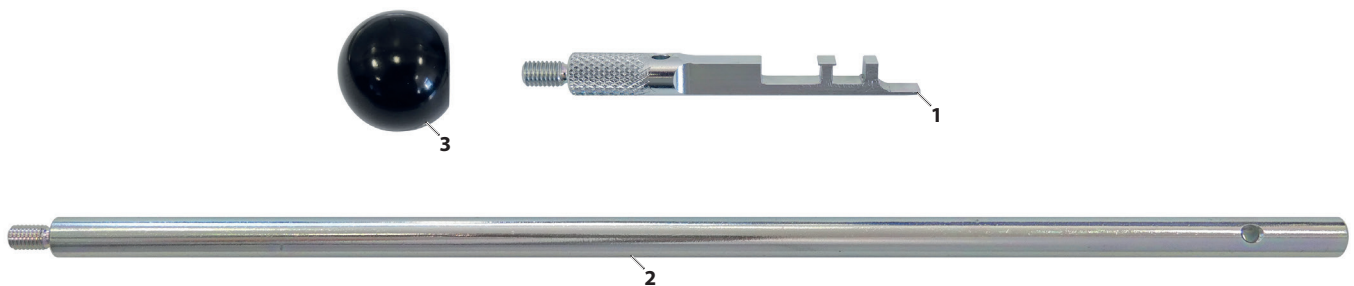
Especially VW-Audi, Seat, Škoda, Porsche, Opel, Fiat, Renault, and many more.

For professional and non-destructive unlocking of cable connectors, for example, on mass air flow sensors, ignition coils, throttle valves, headlights, and generally on all sensors and actuators on the vehicle.

The **unique and particularly compact design** of the unlocking tool allows cable connectors to be **unlocked from both sides**, pulling from behind as well as pushing from the front. The special profile engages completely and **non-destructively** into the release tab on the cable connector. **Even if the release tab is broken off**, the cable connector can be **unlocked without any problems!** For places which are difficult to access, the unlocking tool can be **additionally** extended by 260mm.

- Non-destructive unlocking of cable plugs
- Unlocking from both sides; from the front as well as from behind
- Trouble-free unlocking in case of a defective unlocking tab

EN



Scope of supply/component overview

Item	Part no.	Description	Qty.
1	KL-0190-1301	Blade, short	1
2	KL-0190-1302	Extension	1
3	KL-0255-0018	Ball knob	1

Specifications

Total length without extension:85mm

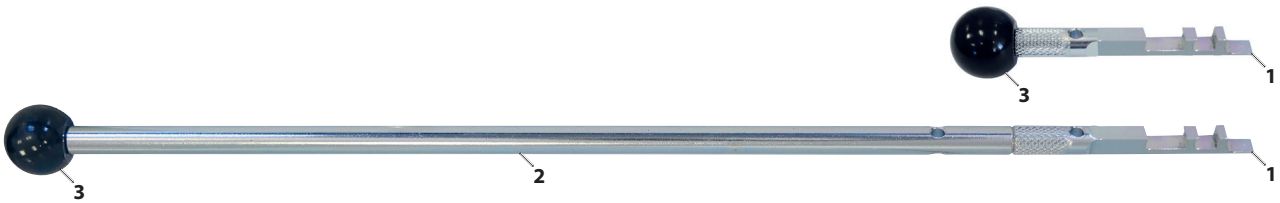
Total length with extension: 345mm

⚠ Safety instructions and regulations

- ✔ **Before using** the special tools, read and understand all safety instructions and **follow** them for **safe use!**
- ✔ Use the special tools **as intended** and **always** carry out maintenance and repair work in compliance with the regulations on occupational safety and accident prevention as well as the vehicle manufacturer's instructions!
- ✔ **Prior to each use**, check the special tools **carefully** for damage, loose parts or unauthorised modifications. **Never** use it if you notice any such deficiencies!
- ✔ **Always** wear your personal protective equipment (*for example safety goggles, protective gloves, safety shoes*) when working!

Preparing the tool

The unlocking tool can be extended by an **additional** length of 260mm for places which are difficult to access.



Typical applications

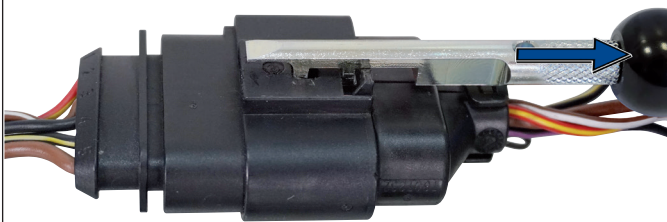
The release tool offers **three different** cable connector release options.



Expert's tip:

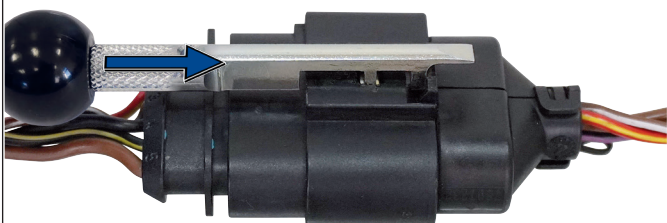
- Blow out the lock on the cable connector with compressed air beforehand.
- Spray some electronic spray into the lock on the cable connector.
- Press the cable plugs against each other while unlocking to facilitate unlocking.

Unlocking option 1



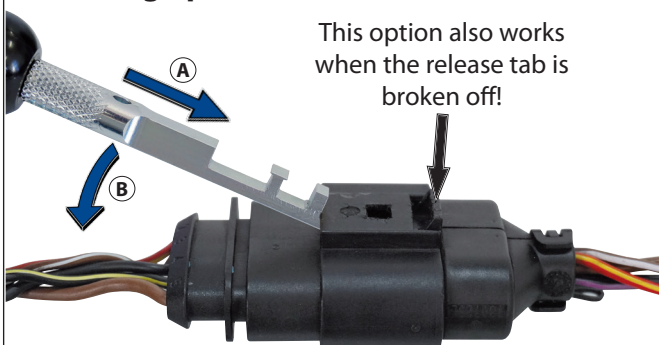
1. Attach the unlocking tool to the cable connector from **behind** as shown.
2. Press the cable plugs against each other with the second hand.
3. **Unlock** the cable connector by **pulling** it with the unlocking tool and **pull it off**.

Unlocking option 2



1. Attach the unlocking tool to the cable connector on the **front** as shown.
2. Press the cable plugs against each other with the second hand.
3. **Unlock** the cable connector by **pushing** it with the unlocking tool and **push it off**.

Unlocking option 3



1. Slide the unlocking tool (A) from the **front** below the lock on the cable connector as shown.
2. Press the cable plugs against each other with the second hand.
3. **Unlock** the cable connector by **lifting** the lock (B) with the unlocking tool, and **push it off**.

GEDORE-Werkzeugfabrik GmbH & Co. KG

Remscheider Straße 149
42899 - Remscheid
Postfach 120361
47873 Remscheid
GERMANY

Vertrieb DEUTSCHLAND

☎ +49 (0) 2191 / 596-0
☎ +49 (0) 2191 / 596-230
✉ info@gedore.com
🌐 www.gedore.com

Sales INTERNATIONAL

☎ +49 (0) 2191 / 596-910
☎ +49 (0) 2191 / 596-911
✉ info@gedore.com
🌐 www.gedore.com

GEDORE TOOLS, INC.

Only for USA, Canada & Mexico
Sólo para EE.UU., Canadá y México
Seulement pour les USA, le Canada et le Mexique
7187 Bryhawke Circle, Suite 700, North Charleston, SC 29418, USA

☎ +1-843 / 225 50 15
☎ +1-843 / 225 50 20
✉ info@gedoretools.com
🌐 www.gedoretools.com

Worldwide GEDORE service centers and offices are listed on the Internet at: www.gedore.com

GEDORE Automotive GmbH

Breslauer Straße 41
78166 - Donaueschingen
Postfach 1329
78154 Donaueschingen
GERMANY

Vertrieb DEUTSCHLAND

☎ +49 (0) 771 / 8 32 23-0
☎ +49 (0) 771 / 8 32 23-90
✉ info.gam@gedore.com
🌐 gedore-automotive.com



www.gedore-automotive.com